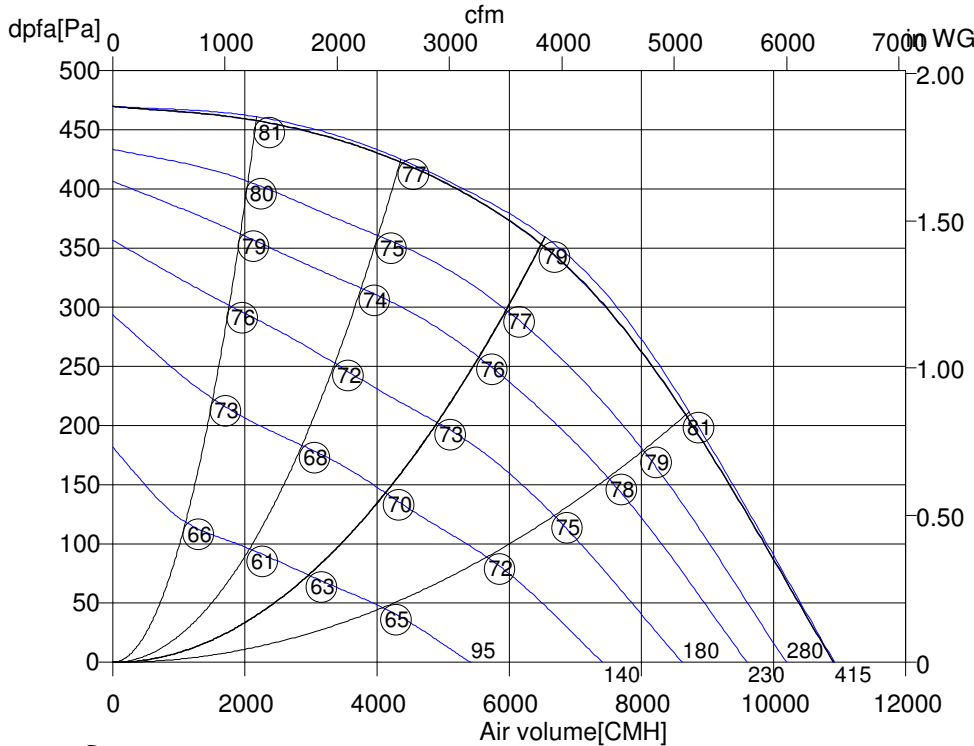


Friday, 19. September 2014



**Free running impeller**  
 With backward-curved aluminum impeller



DKH_630-6_H224.6LA	
Art. No.	
U[V]	400 D
f[Hz]	50
P[kW]	1.19
I[A]	3.15
n[1/min]	920
C[μF]	
tR[°C]	65
dpst[Pa]	
Delta I[%]	
Ia/In	4.4
IP	54
Weight[kG]	29.6
Wir. diagr.	01.006
Overall eff	54.5
Eff. Grade N	64.0
Power input	1.16
Air flow	6195
Press. increase	367
Speed n	919

○ Sound power level LwA8[dBA]

**Data related to operating point**

SFP=0.653 kW/m<sup>3</sup>

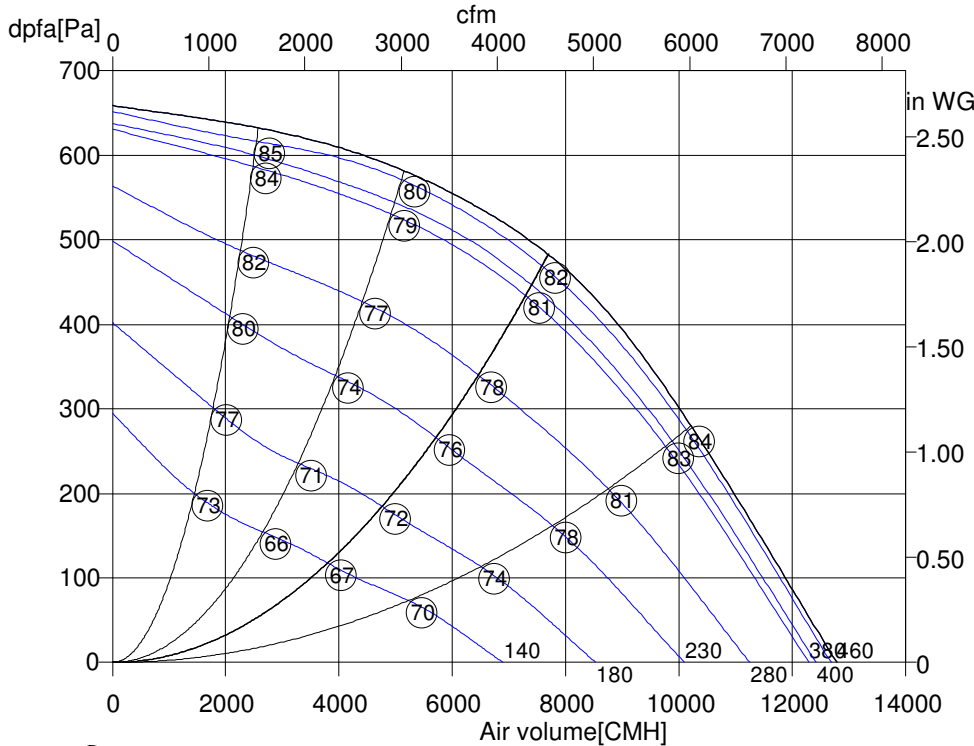
Actual Requested  
 Operating point

	415_D	400_D	280_D	230_D	180_D	140_D	095_D	400	
U[V]								400	
dV/dt[cfm]	3850	3816	3504	3261	2891	2430	1746	3817	3817
dPt[lIn WG]	1.49	1.46	1.23	1.07	0.837	0.592	0.305	1.46	
dPfa[lIn WG]	1.45	1.42	1.20	1.04	0.815	0.576	0.297	1.42	1.42
I[A]	3.27	3.11	2.60	2.60	2.59	2.46	2.05	3.12	
P[kW]	1.22	1.17	0.947	0.834	0.669	0.495	0.272	1.18	
n[U/min]	921	917	849	792	702	596	438	917	

Friday, 19. September 2014



**Free running impeller**  
 With backward-curved aluminum impeller



DKH_630-6_H224.6LA	
Art. No.	
U[V]	460 D
f[Hz]	60
P[kW]	1.89
I[A]	3.55
n[1/min]	1070
C[μF]	
tR[°C]	60
dpst[Pa]	
Delta I[%]	
Ia/In	4.2
IP	54
Weight[kG]	29.6
Wir. diagr.	01.006
Overall eff	54.5
Eff. Grade N	64.0
Power input	1.16
Air flow	6195
Press. increase	367
Speed n	919

○ Sound power level LwA8[dBA]

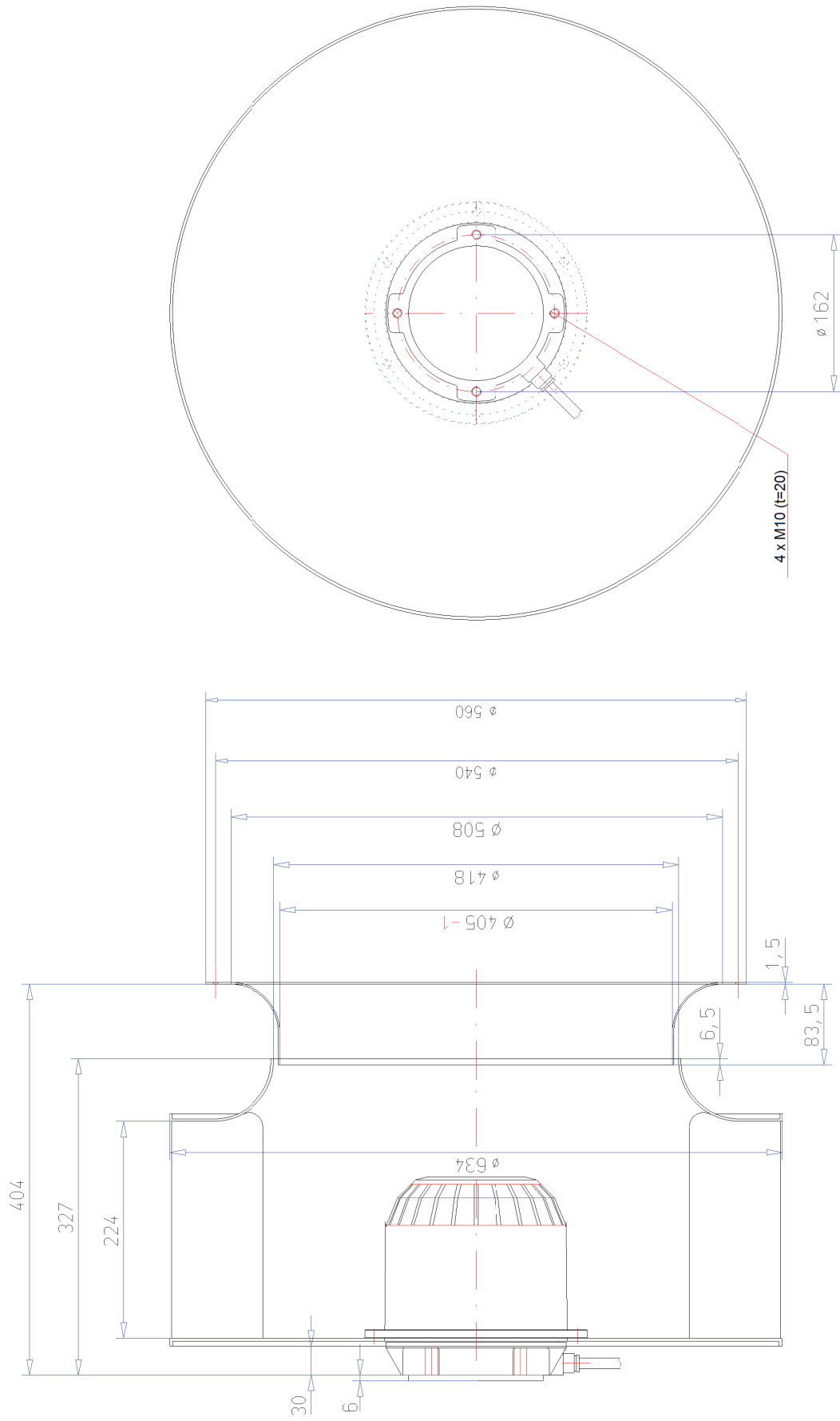
**Data related to operating point**

SFP=0.881 kW/m<sup>3</sup>


Actual Requested  
 Operating point

	460_D	440_D	400_D	380_D	280_D	230_D	180_D	140_D	460	4529
U[V]	460	440	400	380	280	230	180	140	460	4529
dV/dt[cfm]	4525	4461	4352	4291	3799	3360	2800	2235	4525	4529
dPt[ln WG]	2.00	1.94	1.85	1.79	1.41	1.10	0.764	0.487	2.00	
dPfa[ln WG]	1.94	1.89	1.79	1.74	1.37	1.07	0.743	0.473	1.94	1.94
I[A]	3.48	3.40	3.32	3.29	3.35	3.29	3.08	2.74	3.48	
P[kW]	1.88	1.83	1.73	1.67	1.34	1.09	0.788	0.533	1.88	
n[U/min]	1071	1060	1034	1022	905	809	676	548	1071	

**Hint:** ErP-Data @ 50Hz-Type



9	Verfahren	TK/TM, CS, EK (FP)
8	Nr. 1	Accessories
7	Material	
6	Werkstoff	
5	Material	
4	Weight	
3	Weight	
2	Weight	
1	Weight	

Freiheitsvarianten dimensional variation	DIN 7168 m type	Baugröße type
Z014	Name	DKHR 630-6SH-6LA_Q51-63003
Execb.	NA	
Execf.	NA	
Norm.		
 rosenberg Ventilatoren GmbH D - 74653 Kitzingen Tel. (07940) 142-0		
Art. Nr. N 61 - 63010		Meßtabelle scale 1:4 (1:)
VHC \ Gz \ raial \ mir \ DKHR630-6SH-6LA		