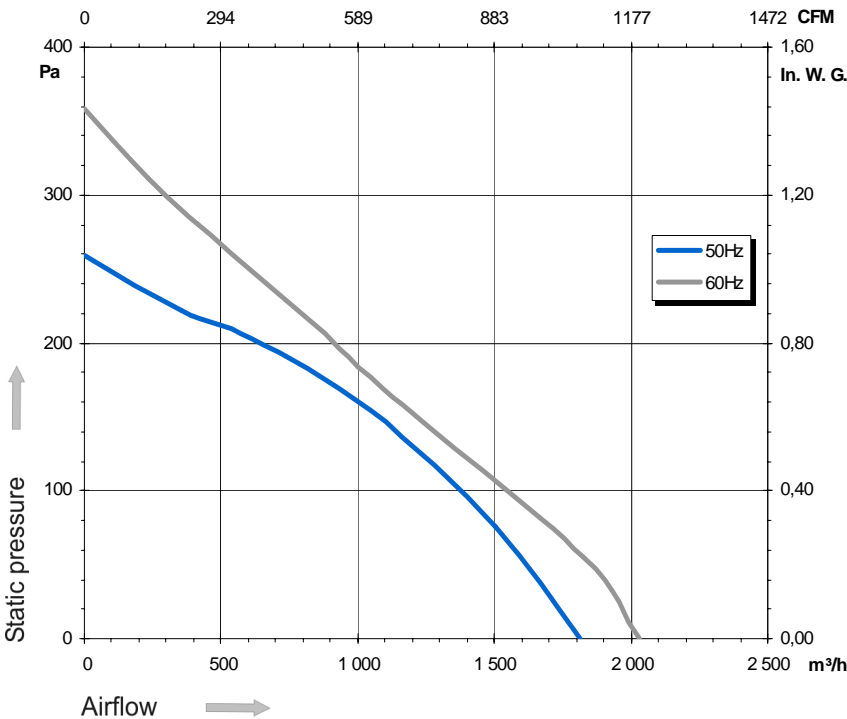
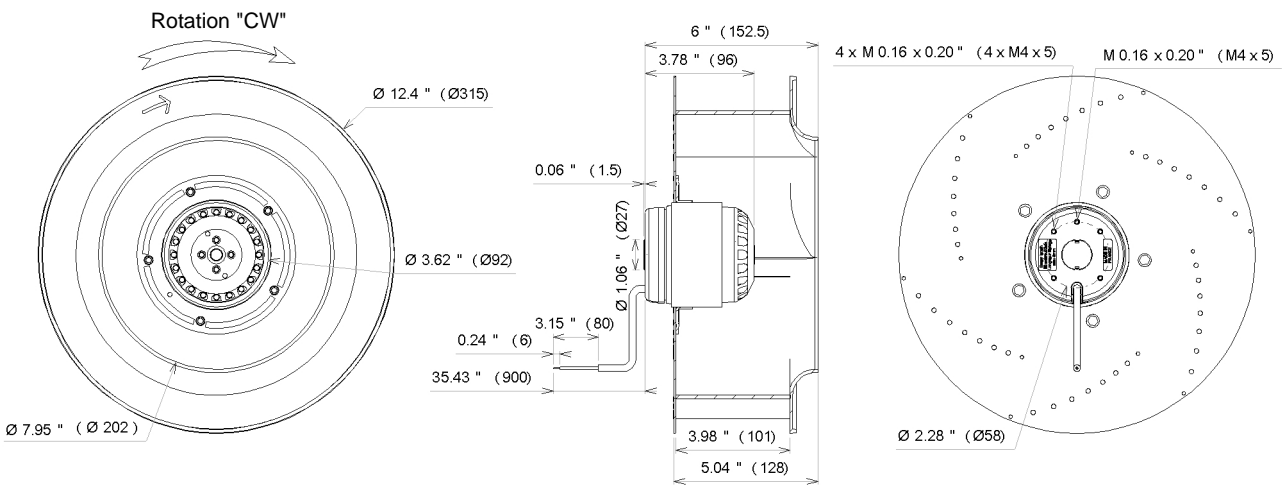
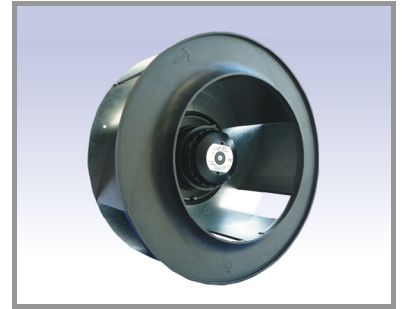


Ind. b - Revision : 07-2008

4RREu45 315x101R P/N B11-A9

Voltage	Frequency	Input power	Current	Capacitor	Airflow	Speed rotation	Noise level	Rotation direction	Operating temperature
V	Hz	Wa	A	µF	m³/h	RPM	dBA	↻	Min / Max
115	50	120	1,06	14,0	1 815	1 340	62	R	-40°C / +50°C
115	60	157	1,37	14,0	2 030	1 500	64	R	-40°C / +50°C
115	50				1068 CFM				-40°F / +122°F
115	60				1194 CFM				-40°F / +122°F



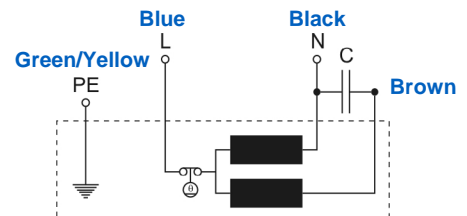
- Weight : 3,9 Kg

- Ball bearing
- Class F, thermally protected
- IP44 protection
- G2.5 balancing
- Rotor : black paint
- PA 6/6 UL 94 V-0 plastic impeller
- UL approved motor

UL2111 (XEW2,8)
N° File E135223
4RS945



Capacitor for 50Hz	Capacitor for 60Hz	Inlet cone
19224	19224	16151



Non contractual document. All specifications are subject to change without prior notice. Picture for information only.