

Ø 7,87" x 2,75"

Ø 200 x 70 mm

Series
200D

ETRI®

DC High Performance Fans

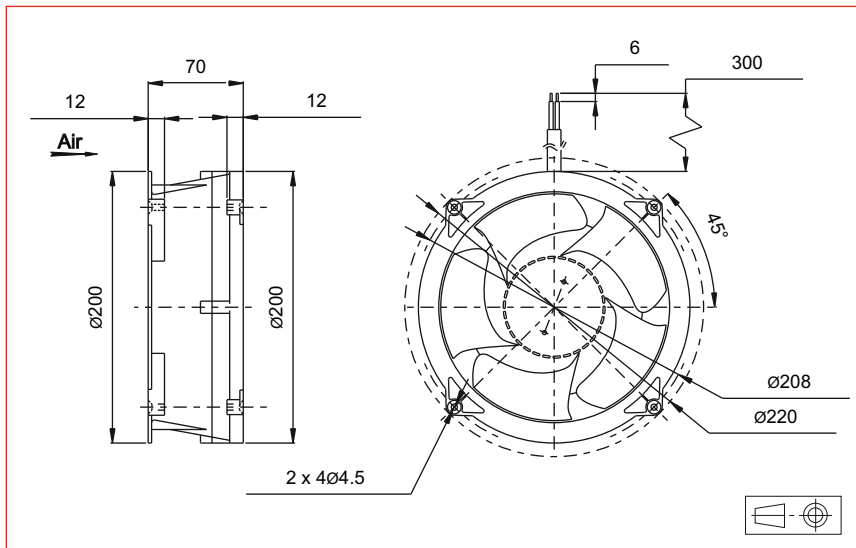


Approvals



Life expectancy

L-10 LIFE AT 40°C:
40 000 hours

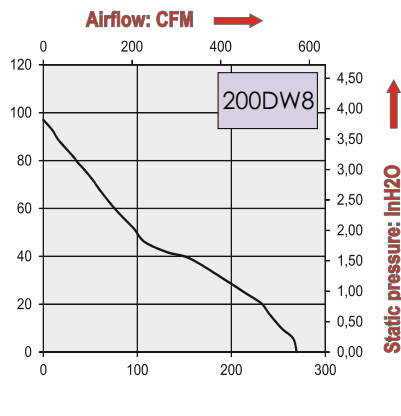
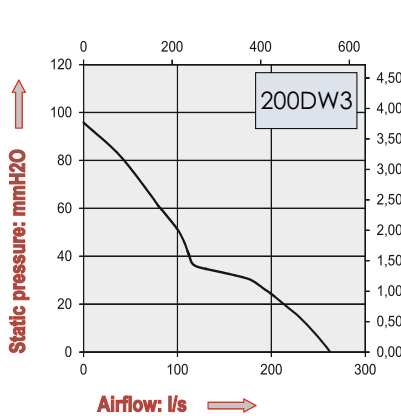


DC Motor

Housing material: aluminium
Impeller material: plastic UL 94 V0
Weight: 2,5 kg
Bearing system: ball bearings
Shock and vibration protected

Available with:

- Alarm
- 0-10V speed control (analog or PWM)
- Tachometric output
- Insulated output
- Salt spray protection



Railway specifications:

- IP54 motor
- Locked rotor protection
- Reverse polarity protection
- Microcontroller
- Fire and smokes class
- EN 61373 standard

| Part Number | Nominal voltage | Airflow | Noise level | Nominal speed | Input Power | Voltage range | Connexion type | | Operating temperature | |
|---------------|-----------------|---------|-------------|---------------|-------------|---------------|----------------|-----------|-----------------------|--------|
| | V | l/s | dB(A) | RPM | W | V | Leads | Terminals | Min.°C | Max.°C |
| 200DW3LM11000 | 28 | 260 | 74,8 | 5020 | 184 | (19,6-35) | X | | -30 | 60 |
| 200DW8LM11000 | 110 | 270 | 74,8 | 5190 | 172 | (77-137,5) | X | | -30 | 60 |
| | | | | | | | | | | |
| | | | | | | | | | | |
| | | | | | | | | | | |
| | | | | | | | | | | |
| | | | | | | | | | | |
| | | | | | | | | | | |
| | | | | | | | | | | |
| | | | | | | | | | | |
| | | | | | | | | | | |
| | | | | | | | | | | |
| | | | | | | | | | | |
| | | | | | | | | | | |
| | | | | | | | | | | |
| | | | | | | | | | | |
| | | | | | | | | | | |
| | | | | | | | | | | |
| | | | | | | | | | | |

Additional versions:
Other voltages: 48V and 72V
Lower speed on request